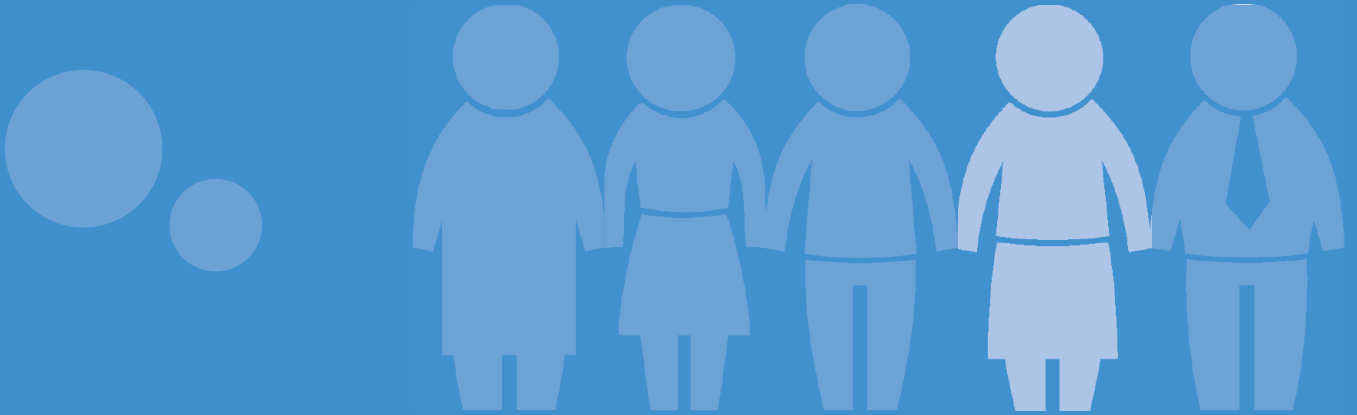


Cheshire West & Chester Council

Focus on Feedback

Comments, Compliments and Complaints



We're Listening – How to Contact Us

One of the most effective ways of judging our performance and our service is to listen to our learners and our partners.

If you wish to, there are several ways of contacting us and giving feedback at any time:

Telephone us: 07990532869

Email us: skillsandemployment@cheshirewestandchester.gov.uk

Write to us:

Skills and Employment,
Cheshire West and Chester Council,
The Portal,
Wellington Road,
Ellesmere Port
CH65 0DA.

We will acknowledge your communication within 2 working days and respond formally within 10 working days.

If you wish to communicate with us through the central council systems, go to www.cheshirewestandchester.gov.uk. Go to 'Do it Online' and click on Report It. Click on Comments, Compliments and Complaints

Our inspectorate, Ofsted, would also like to hear your views on your learning experience with us and have a survey always open to learners. Please go to <http://www.learnerview.ofsted.gov.uk/> and follow the links

www.cheshirewestandchester.gov.uk



Cheshire West
and Chester